

GLOBAL KYUTSE SUPPLIES



COMPANY PROFILE

Construction • Excavation • Demolition •
Site Evacuation • Garbage Collection

2025

www.globalkyutse.com





Global kyutse
supplies

Company information

Name of the Company	: Global Kyutse Supplies Limited.
Legal Status	: It was registered in Kenya in 2025 as Approved General Constructors.
Certificate of Incorporation No	: PVT-V7UADE59
Name of Directors	: Peter Kalong'a Kilonzo : Joyce Kasyoka Kabwele
Company Pin	: P052405203Q



TABLE OF **CONTENT**

- About Company
- Welcome Message
- Our Vision
- Our Mission
- Our Service
- Our Project
- Meet Our Team
- Get In Touch

Global Kyutse supplies



ABOUT COMPANY

Global Kyutse Supplies Limited is a Kenyan company specializing in construction support services, including excavation, demolition, site evacuation, and garbage collection.

The company was established to provide reliable and efficient services to both public and private sector clients. Our team consists of experienced professionals dedicated to delivering projects safely, efficiently, and within the required timelines.

We are committed to supporting infrastructure development by providing high-quality services that meet industry standards.



Global kyutse supplies



WELCOME MESSAGE

Welcome to Global Kyutse Supplies!

At Global Kyutse Supplies, we pride ourselves on being a leading provider of high-quality products, modern equipment, and reliable services across multiple sectors. Our dedication to excellence, innovation, and customer satisfaction has positioned us as a trusted partner for businesses, institutions, and individuals alike. We understand that in today's fast-paced environment, timely supply, durable equipment, and professional service are essential, and we ensure that all our offerings meet these standards.

OUR VISION, MISSION & VALUES

Vision

To become one of the most trusted and reliable construction support companies in Kenya.

Mission

To provide reliable and efficient construction support services while maintaining the highest standards of safety, quality, and customer satisfaction.

Values

- Integrity
- Professionalism
- Safety
- Efficiency
- Customer Satisfaction



OUR MANAGEMENT

The management team comprises qualified and experienced professionals dedicated to ensuring efficient service delivery. The company is led by the Managing Director and supported by a team with strong technical expertise and excellent public relations skills.

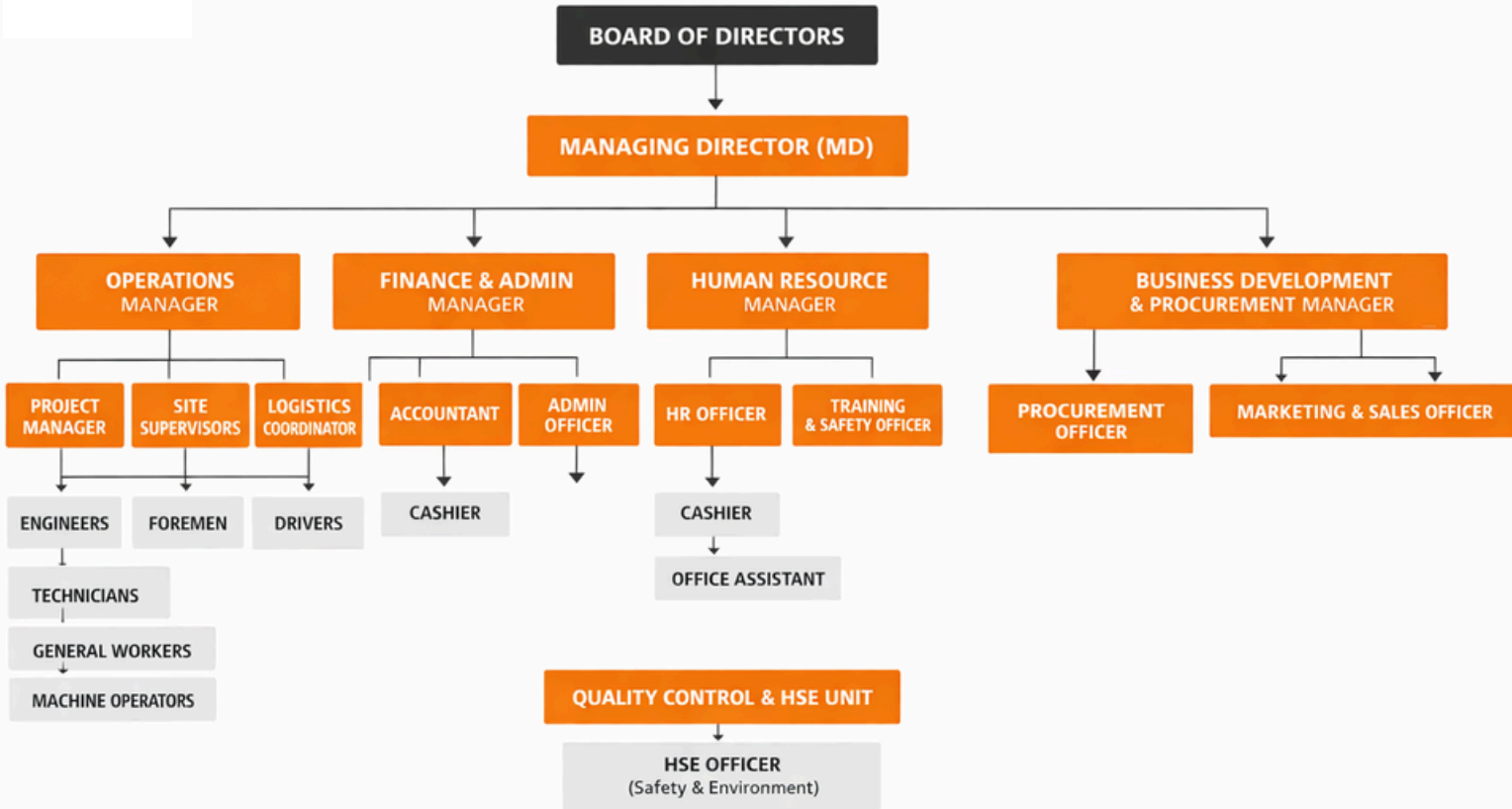
Our personnel have previously worked with reputable organizations, bringing valuable industry experience into the company. The team is client-focused, responsive, and committed to meeting and exceeding expectations.

Where specialized expertise is required, the company collaborates with local and international partners to ensure projects are completed efficiently and to the highest standards.





GLOBAL KYUTSE SUPPLIES LTD ORGANIZATIONAL STRUCTURE



Global kyutse supplies



OUR SERVICE

CONSTRUCTION SERVICES

We undertake various construction works ranging from small-scale developments to large and complex projects. Our team ensures quality workmanship, adherence to timelines, and cost-effective solutions.





OUR SERVICE

DEMOLITION SERVICES

Our demolition services are carried out safely and efficiently, ensuring minimal environmental impact and full compliance with safety regulations.





OUR SERVICE

SITE EVACUATION

We specialize in clearing construction sites, removing debris, and preparing land for new developments in a timely and organized manner.



Global kyutse supplies



OUR SERVICE

EXCAVATION SERVICES

We provide professional excavation services for building foundations, road works, and other civil engineering projects using modern equipment and skilled personnel.



Global kyutse supplies



OUR SERVICE

WASTE MANAGEMENT & GARBAGE COLLECTION

We provide professional waste management solutions, including garbage collection, disposal, and recycling services. Our team ensures a clean and safe environment for your site or premises while adhering to local regulations and sustainability practices.





OUR PROJECT

SITE EVACUATION & CLEARING

- Efficient relocation of materials, debris, and equipment to prepare construction sites for development.
- Ensuring minimal disruption to surrounding areas while maintaining timelines.
- Ideal for new building sites, renovations, or land repurposing projects.

EXCAVATION PROJECTS

- Expert earthmoving, trenching, and foundation preparation for both commercial and residential developments.
- Handling large-scale excavation while maintaining safety and structural integrity.
- Includes grading, leveling, and soil management for long-term project success.



OUR PROJECT

DEMOLITION WORKS

- Safe and controlled demolition of structures, from small buildings to large complexes.
- Employing modern equipment and techniques to minimize risk and environmental impact.
- Fully compliant with Kenyan safety regulations and environmental standards.

SITE WASTE MANAGEMENT

- Collection, disposal, and recycling of construction and general waste.
- Reducing environmental footprint while maintaining clean and organized worksites.
- Customized waste management plans for each project to ensure efficiency and compliance.



OUR PROJECT

SPECIALIZED CONTRACT PROJECTS

- Tailored solutions for unique client needs, including temporary site setups, logistical support, and emergency site services.
- Ability to handle multi-phase or complex projects with strict timelines.
- Focused on delivering measurable results and client satisfaction.

MEET

OUR TEAM



Peter Kilonzo

Peter Kilonzo oversees daily operations, ensuring projects run efficiently, safely, and on schedule. He is known for strong coordination and attention to detail.



Joyce Kasyoka

Joyce Kasyoka oversees marketing strategies and human resource functions, ensuring strong brand visibility and effective team management. She plays a key role in staff coordination and business growth.



Global kyutse supplies

GET IN TOUCH

At Global Kyutse Supplies Limited, we are always ready to support your construction, excavation, demolition, and site service needs. Whether you have a project inquiry, need a quotation, or require urgent services, our team is available to assist you promptly and professionally.

Contact Us :

 **0716 339 213 / 0719 417 477**

 **www.globalkyutse.com**

 **info@globalkyutse.com**

 **Ambalal House, Nkrumah Road
P.O. Box 000 – 80100, Mombasa**